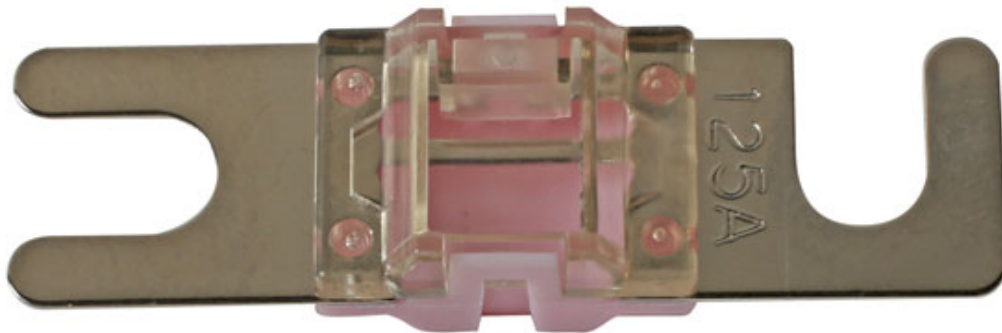


Midi Fuses, Open Ended 125A 2pc

A pack of 125 amp open ended midi fuses. The opened ended design enables fuses to be easily changed without removing the fixing bolts, saving time.



Additional Information

- 125 amp open ended midi fuses, with slotted fixing points for ease of use.
- Housing material: thermoplastic; metal: copper nickel plated.
- Voltage rating: 32V DC max.
- Conforms to SAE J1171 & ISO 8820-5.
- Included in assortment of open ended midi fuses, Part No. 37645. Also included in Tesla mixed fuses kits, Part Nos. 30158 (78pc), 30159 (29pc).

<http://product/37653>

